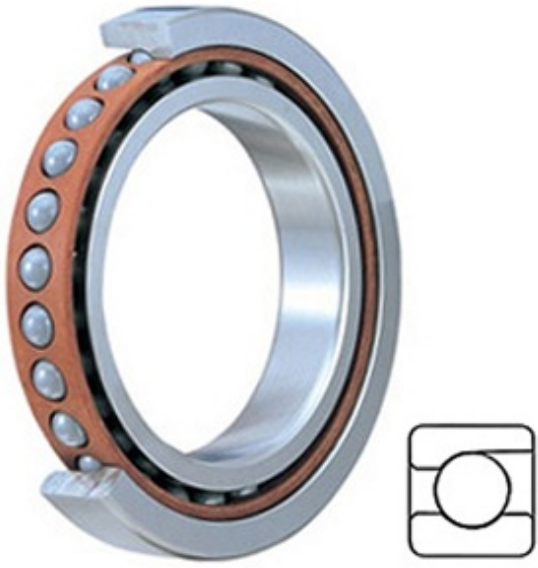




## BEARING CORP.OF AMERICAN LTD.



3.543 Inch | 90 Millimeter x 5.512 Inch | 140  
Millimeter x 0.945 Inch | 24 Millimeter TIMKEN  
2MM9118WI Precision Ball Bearings

Bearing No. 2MM9118WI

2MM9118WI Bearing 2D drawings and 3D CAD models

Category	Precision Ball Bearings
Inventory	0.0
Manufacturer Name	TIMKEN
Minimum Buy Quantity	N/A
Weight	1.171
EAN	0087796202498
Product Group	B04270
Enclosure	Open
Precision Class	ABEC 7   ISO P4
Material - Ball	Steel
Number of Bearings	1 (Single)
Contact Angle	15 Degree
Preload	None
Raceway Style	1 Rib Outer Ring
Cage Material	Phenolic
Rolling Element	Ball Bearing
Flush Ground	No
Inch - Metric	Metric
Other Features	Single Row   Angular Contact   Super High Precision
Long Description	90MM Bore; 140MM Outside Diameter; 24MM Width; Open Enclosure; ABEC 7   ISO P4 Precision; Steel Ball Material; 1 (Single) Bearings; 15 Degree



## BEARING CORP.OF AMERICAN LTD.

	Contact Angle; Phenolic Cage Material; 1 Rib Outer Ring Ra
Category	Precision Ball Bearings
UNSPSC	31171531
Harmonized Tariff Code	8482.10.50.28
Noun	Bearing
Keyword String	Angular Contact Ball
Manufacturer URL	<a href="http://www.timken.com">http://www.timken.com</a>
Manufacturer Item Number	2MM9118WI
Weight / LBS	2.581
B	0.945 Inch   24 Millimeter
D	5.512 Inch   140 Millimeter
d	3.543 Inch   90 Millimeter
d - Bore	90 mm
D - Outer Diameter	140 mm
Bearing Width	24 mm
do - Ball Diameter	15.081250 mm
C0 - Static Radial Rating	68900 N
Ce - Dynamic Radial Rating <sup>1</sup>	79600 N
Limiting Speed (Grease)	9200 rpm
Limiting Speed (Oil)	18400 rpm
Ball Type	STEEL
Cage Type	CR - Phenolic Outer Land Riding Cage
Bearing Weight	1.17 Kg
Design Units	METRIC
Full Timken Part Number	2MM9118WICR
R - Inner Ring To Clear Radius <sup>2</sup>	1.5 mm
r - Outer Ring To Clear Radius <sup>3</sup>	1.5 mm
da - Inner Ring Backing	99.700 mm



## BEARING CORP. OF AMERICAN LTD.

Diameter	
Da - Outer Ring Backing Diameter	130.900 mm